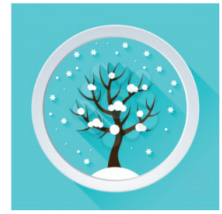


NEWS

The Calendar



February 15-20
Mid-Winter Break, EEU Closed



April 13-17
Spring Break, EEU Closed



Saturday, May 9
EEU Auction



Monday, May 25
Memorial Day, EEU Closed

EEU Merch Update

Our next merch order period will be March 1 through March 20. And yes! We will have more children-sized options.

Stay tuned for a link to the store later this month!



Classroom of the Month



The Turtles with Teacher Seth!

We've had a lively start to 2026 in the Turtle classroom!

Turtles were making each other feel special, coloring Happy Birthday pictures and writing messages to their friends as there were back-to-back birthdays in January. There was an intense discussion over what was better: rain, snow, or spiders. And there was a surprising amount of support for all three and a consensus that sunny days are overrated.

The Turtles are looking out for each other. They make sure all their friends are safe and having fun.

ACCESS IS LOVE

At the EEU, one essential way we practice our values is through planning for and meeting access needs. Access needs are supports, tools, or changes that help someone fully participate, thrive, and do their best. Meeting access needs is a key part of building an inclusive community.

Disabled people have always led the way in naming and advocating for access, and access benefits all of us. Access supports can be physical (like ramps, wheelchairs, or glasses), sensory (like noise-canceling headphones or fidgets), communication-related (like AAC or visual schedules), or include social-emotional and learning supports (like predictable routines, calming with a trusted adult, or extra time to process).

In our classrooms, teachers intentionally plan to meet access needs so that all children are ready to learn. And it's not just children, grown-ups have access needs too. Recognizing and sharing these needs helps us take care of ourselves and each other. Right now, many of us are experiencing increased social and political stress, which can shift access needs, making predictability, flexibility, and emotional support especially important.

Normalizing access needs at home and in the community helps children learn that needing support is not a problem- it's part of being human. When families name and accommodate access needs at home, at work, in community spaces, and in everyday life, they build a culture where everyone belongs.

Access is love. Especially now.

Learn more about Access as an Act of Love here: [Access is Love](#) and [Ways to Start: Creating Access](#)

Haring Center 101

Join fellow EEU families and Caregivers online for Haring Center 101! You'll hear from former EEU teachers who have advanced inclusive education in exciting ways through research, training, and professional development. We'll also share more about the Haring Center's mission, history, impact, and how the EEU fits into this work. Together, we'll explore how families are part of a vibrant community shaping the future of inclusion.

Event Details

- Date: February 4, 2026
- Time: 6:30-7:30 PM
- Zoom Meeting Invite: <https://washington.zoom.us/j/92107129382?from=addon>
- Accessibility: Live captions and post-event transcript
- Recording available after the session

No RSVP required, but you can submit questions in advance using this linked RSVP form or by emailing Noam directly at nsoker@uw.edu.

UWLEND

POSITIVE PARENTING: PARENT EDUCATION AND SUPPORT FOR CHALLENGING BEHAVIOR

We are inviting parents and caregivers of children ages 3-12 years old in the Pacific Northwest with suspected or diagnosed delay or disability who want to learn strategies to understand, support, and respond to challenging behavior and connect with other parents to take part in a 10-week remote research series. We use the **Project ECHO, All Teach All Learn** mind set, so everyone learns together.

We Hope to:

- Share evidence-based strategies to understand, support, and respond to challenging behaviors
- Develop a confidential, community safe space
- Support each other

We Provide:

- Experienced multidisciplinary team of experts
- Computer-based language translation
- Live Spanish language support

10 WEEK VIRTUAL SERIES
THURSDAYS
FEBRUARY 26-APRIL 30
12:30-1:45

IF YOU HAVE ANY QUESTIONS PLEASE
CONTACT SUE ADELMAN
ADELMS@UW.FDU
[CLICK HERE FOR REGISTRATION FORM](#)

REGISTER NOW

A Spin on Coffee & Conversations
February's family engagement opportunity
will happen virtually midday.

Keeping it Together At School.....and Letting it All Hang Out At Home

This community conversation will center on supporting children who seem to be "holding things together" for a full day of school, then come home and experience social-emotional dysregulation. This is something many families experience, and this session will be an opportunity to both learn from and support your parent community. A presenter will share some general perspectives and strategies, and participants will collaboratively use their expertise to share other ideas and perspectives to support their peers.

Thursday
2/5
12-1pm

ZOOM LINK

AAC User Group

for EEU Parents and Caregivers

WHAT: A monthly meeting of families and other caregivers striving to grow our capacity to provide AAC support for the little learners we love. Meeting format:
An educational presentation on an aspect of AAC (15-20 minutes)
A case study presented by a parent/caregiver describing an AAC-related challenge they are experiencing (10-15 minutes)
Clarifying questions from the group (5 minutes)
Supportive feedback from other parents/caregivers on the challenge (10-15 minutes)
Supportive feedback from SLPs (10-15 minutes)
Sharing AAC "wins" and successes from the previous month (5 minutes)

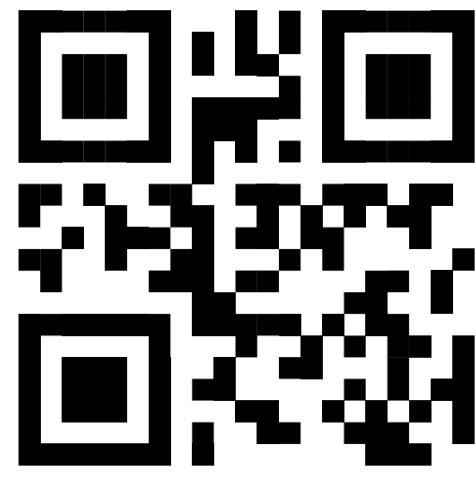
WHEN: One evening per month (time to be determined after results of a family survey are in) for about an hour.
WHERE: Zoom online meeting platform.
WHO: Mary Simkin-Maass, MS, CCC-SLP (facilitator) + other members of your EEU SLP team + EEU parents + other caregivers
WHY: To build a supportive and judgment-free community where we can learn and grow together!

Take the survey!

February Parking Code

Pickup and dropoff parking QR codes change monthly.

Pickup a physical copy at the front office.



School Meal Calendar

EEU SCHOOL MENU FOR THE WEEK OF Feb 2-4				
MONDAY	TUESDAY	WEDNESDAY	THURSDAY	FRIDAY
AKAAT SERIAL PINEAPPLE CHICKEN % MILK	BANANA BREAD RASPBERRIES % MILK	SERIAL PEACHES % MILK	BEETS & LAM BLUBERRIES % MILK	SERIAL RASPBERRY ORANGES % MILK
OH FISH STICKS BAKED POTATO FRANZELLES % MILK	SOUS VIDE TURKEY BACON W/ BEANS & POTATOE SPANISH RICE MANGO % MILK	TOMATO SOUP BUTTER PASTA SWEETS STRAWBERRIES % MILK	TURKEY & CHEESE SANDWICH CUCUMBER DANDELIONS % MILK	TORNILLO & SAUCE SALAD BRANES % MILK
INACK PRETZELS CHEESE % MILK	GOLD FISH CRACKERS APPLE SLICES % MILK	BUNNY CRACKERS PEAR SLICES % MILK	APPLE OATMEAL BERRY MILLS BANANAS % MILK	TORNILLO CHIPS SALSA CHEESE % MILK

% SUBJECT TO CHANGE DUE TO PRODUCT AVAILABILITY

Sickness and Bussing

If you need to let the bus driver know that your child is out sick, you can call the SPS Bus Info at (206) 252-0900 to let them know. Please have your students' ID number ready when you call. Again, this is just for day-to-day communication.

For long-term changes to bussing (i.e.: if you are moving) please see Meghan in our front office or call them at (206) 543-4011.

If you need immediate assistance during the school day regarding things for your child, or if you need to communicate something pressing, please call the main office at (206) 543-4011. Teaching teams likely will not be able to answer their classroom phones. While they check the TalkingPoints app throughout the day, it is always best to communicate important and timely information through the main office, to ensure the information is relayed properly.