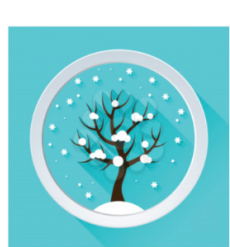


NEWS

The Calendar



Monday, January 19
MLK Day, EEU Closed



February 15-20
Mid-Winter Break, EEU Closed



April 13-17
Spring Break, EEU Closed



Saturday, May 8
EEU Auction

EEU Merch Update

Happy New Year!

Those of you who bought EEU merch at the end of 2025, we have an update!

Items were shipped today! They will be shipped to the EEU for in-person pickup. If you'd like your items to be sent home in backpacks, please email [Travis Sherer](mailto:Travis.Sherer@uw.edu).



Classroom of the Month



The Penguins with Teacher Savannah!

The Penguin class has had a wonderful start to the school year! We love spending time outside in our patio space -- playing with bubbles and chalk, collecting fallen leaves, and engaging in lots of imaginative play. The Penguins have also enjoyed exploring different materials in the sensory table, especially water! We have been building friendships and strengthening our classroom community by learning about one another through our Family and Identity Studies. We also spend a lot of time discussing our school values and writing Penguin Shoutouts when we notice a student or teacher practicing them! We look forward to coming back together after the Winter Break, getting into our school routine, and determining our next unit of study as a class!

Winter Weather Cheatsheet

'Tis the season... for a reminder of our Winter Weather Closure Procedures

❄️ If Seattle School District is open and on time; but using emergency bus routes*; then: EEU is open for Kindergarten and Preschool using emergency bus routes. Early Support Toddler Time is open.

❄️ If Seattle School District is open & operating on a 2 hour delayed schedule; but using emergency bus routes*; then: EEU follows a delayed school schedule for Kindergarten and Preschool using emergency bus routes. Early Support Toddler Time is open; depending on the duration of the late start. Toddler Time families will be contacted.

❄️ If Seattle School District is closed: ALL EEU CLASSES ARE CLOSED. Based on weather conditions, if Seattle schools buildings are closed with students at home engaged in remote learning, we will also use technology and remote learning instruction so students can continue to learn from home during inclement weather/snow days. The first day of remote learning will have a 2-hr late start. If families don't have access to technology, please contact family support.

❄️ The Principal will send out an email to the parent listserv in case of school delay or closure. You can also check the internet or listen to radio or TV stations for announcements.

*** Note: If your child rides the school bus, the district will be sending out alternate locations for pick-up and drop-off for the emergency snow bus routes.**

Thinking About Inclusion

For families of children with IEPs (Individualized Education Plans), this time of year can be stressful. Even though summer feels far away, for those families, planning for kindergarten or first grade is already underway through riser meetings. These transitions can be exciting and anxiety-provoking, especially when families worry about entering spaces that may be less inclusive.

We wanted to take a moment to remind us all that inclusion is a collective responsibility. Families of disabled children and disabled adults should not have to carry advocacy alone. Families of non-disabled children play a critical role by talking openly about difference, supporting practices that keep children learning together, and speaking up when exclusion is treated as "normal" or inevitable.

Living our values means being intentional about inclusion in all community spaces, schools, playgrounds, faith groups, playdates, gym classes, and beyond.

What We Can All Do

- Everyone can ask how schools and programs support children with different access needs
- Ask who isn't included or is separated and why
- Share your excitement about being in diverse and inclusive spaces
- Choose and support inclusive classrooms, shared learning spaces, and programs
- Notice whose needs are centered and whose are treated as "extra"
- Model respect, flexibility, and care in how we talk about differences
- Teach children to name and challenge unfairness, and model that advocacy ourselves in our community spaces
- Share your experiences to help debunk myths about inclusion for children with disabilities

Inclusion doesn't happen by accident. It happens when we all use our voices, choices, and relationships to help create communities where all children belong now and in the future.

Haring Center 101

Join fellow EEU families and Caregivers online for Haring Center 101! You'll hear from former EEU teachers who have advanced inclusive education in exciting ways through research, training, and professional development. We'll also share more about the Haring Center's mission, history, impact, and how the EEU fits into this work. Together, we'll explore how families are part of a vibrant community shaping the future of inclusion.

Event Details

- Date: February 4, 2026
- Time: 6:30-7:30 PM
- Zoom Meeting Invite: <https://washington.zoom.us/j/92107129382?from=addon>
- Accessibility: Live captions and post-event transcript
- Recording available after the session

No RSVP required, but you can submit questions in advance using this linked RSVP form or by emailing Noam directly at nsoker@uw.edu.

Poker Night!!

The Friends of the Haring Center invite you to the Poker Party to support the Haring Center's Auction!

All experiences are welcome to join on January 31, 2026 at Fremont Abbey for the Arts - 1st Floor Gallery. Get your poker fix or come to support together with new friends and old. The Friends of the Haring Center are so excited to be back and can't wait to see you there! Dinner and drinks provided by long time supporters and friends It's All Good Catering and Pecado Bueno!

This year the event's goal is \$5,000, to help fund items for the Haring Center's May 9, 2026 Auction: Step Right Up for Inclusion! Reach out to Haring Center volunteer Michaela Terrenzio (Michaela.terrenzio@gmail.com) with questions.

Event Details: All experience levels welcome. Proceeds support the Haring Center Auction.

Price: \$150 first buy-in (includes dinner/drinks), \$100 for one optional re-buy, \$50 for non-players (includes dinner/drinks)

Date: January 31, 2026
Dinner: 5:30pm, Play 6:30-11:00pm
Hosted at Fremont Abbey for the Arts - 1st Floor Gallery

Emergency Contact Form

Many of you still have not filled out your emergency contact form. Please do so ASAP.

This form has questions that ensure the health and safety of your kiddo. You can find this form [here](#).

Coffee and Conversations

First Coffee and Conversations of 2026 is January 22!

Coffee and Conversations are casual gatherings that are meant to invite connections within the caregiving community.

We will invite a conversation around how families can create and participate in inclusive play opportunities outside of the school setting. There are no expectations around conversational contributions. All are welcome to come and just listen if that's more your style.

COFFEE & CONVERSATIONS 2025-2026

- 1/22/26 Thursday 9-10am
- 2/24/26 Tuesday 9-10am
- 3/18/26 Wednesday 6:30-7:30pm
- 4/23/26 Thursday 9-10am
- 5/28/26 Thursday 9-10am

Values	Goal
We value everyone. We care for ourselves and each other. We keep learning. We take care of our school.	These events provide valuable opportunities for caregivers of EEU students to meet, connect, and show well each other in an informal, supportive environment.

*More detailed information will be provided prior to each event.

School Meal Calendar

MONTH	EEU SCHOOL MEALS FOR THE WEEK OF	THURSDAY	FRIDAY
JANUARY	JANUARY 13-19	JANUARY 13-19	JANUARY 13-19
FEBRUARY	FEBRUARY 23-29	FEBRUARY 23-29	FEBRUARY 23-29
MARCH	MARCH 7-13	MARCH 7-13	MARCH 7-13
APRIL	APRIL 14-20	APRIL 14-20	APRIL 14-20
MAY	MAY 4-10	MAY 4-10	MAY 4-10

Sickness and Bussing

If you need to let the bus driver know that your child is out sick, you can call the SPS Bus Info at (206) 252-0900 to let them know. Please have your students' ID number ready when you call. Again, this is just for day-to-day communication.

For long-term changes to busing (i.e.: if you are moving) please see Meghan in our front office or call them at (206) 543-4011.

If you need immediate assistance during the school day regarding things for your child, or if you need to communicate something pressing, please call the main office at (206) 543-4011. Teaching teams likely will not be able to answer their classroom phones. While they check the TalkingPoints app throughout the day, it is always best to communicate important and timely information through the main office, to ensure the information is relayed properly.